

ViSiGi®

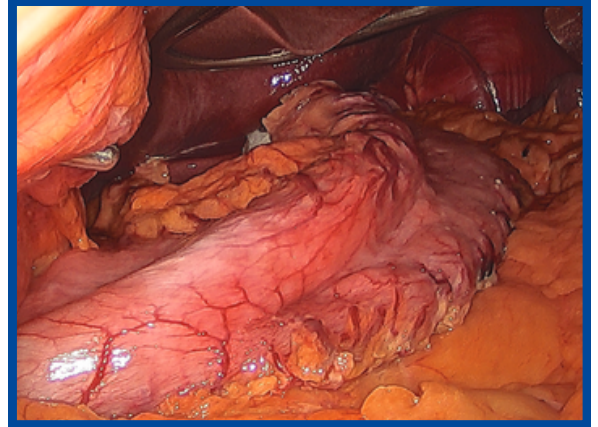
Your Peak Efficiency Partner

BOEHRINGER®

Performing a Sleeve Gastrectomy?

ViSiGi® was designed from the pylorus up for efficient, single-insertion sleeve gastrectomies, making your procedure simpler and faster.

- **Decompress:** ViSiGi®'s large, blunt design allows fast, accurate stomach decompression and reduces misplacement risk.
- **Delineate:** Proprietary suction and fenestration offer clear device visibility, enhancing stapling precision.
- **Dissect:** Clear visualization simplifies staple line selection for confident surgical decisions.



ViSiGi® for Sleeve Features

- **Selection Valve**

Vented close position allows for safe adjustment of the device. Open position allows for decompression and internal stabilization.



- **Bulb (optional)**

The optional air leak test bulb allows anesthesia to quickly and safely apply controlled pressure to your newly created sleeve to allow for a leak test.



- **Safe Suction**

Integral suction control automatically reduces High-Vacuum to clinically effective levels to ensure maximum delineation. Suction is set to 125mmHg.

- **Markings**

Depth markings on the ViSiGi® provide clear visual indicators for accurate placement in the esophagus, helping ensure precise positioning and real-time confirmation during surgery.



- **Malleable Tip**

Blunt tip reduces the likelihood of perforation, but latterable flexibility aids in placement of the device. Internal reinforcement provides added hoop strength to ensure externally consistent sizing diameter

| P/N | Description | Ordering |
|-------|---|-------------------|
| 5232 | ViSiGi 3D® Calibration System, 32Fr | 1 Box (5 Systems) |
| 5232B | ViSiGi 3D® Calibration System w/ Bulb, 32Fr | 1 Box (5 Systems) |
| 5236 | ViSiGi 3D® Calibration System, 36Fr | 1 Box (5 Systems) |
| 5236B | ViSiGi 3D® Calibration System w/ Bulb, 36Fr | 1 Box (5 Systems) |
| 5240 | ViSiGi 3D® Calibration System, 40Fr | 1 Box (5 Systems) |
| 5240B | ViSiGi 3D® Calibration System w/ Bulb, 40Fr | 1 Box (5 Systems) |
| 5250 | ViSiGi 3D® Bulb | 1 Box (5 Bulbs) |